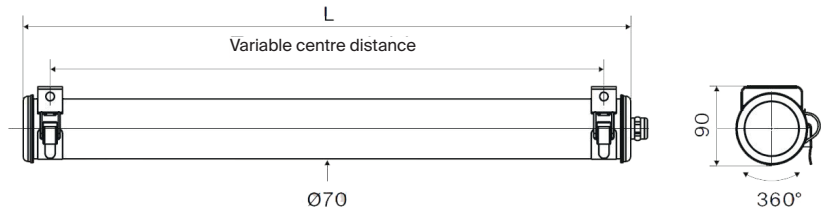
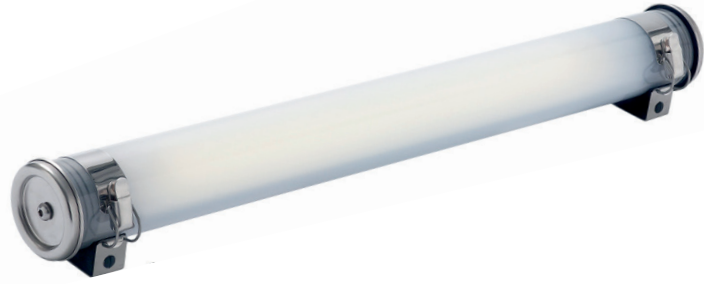


# Foucault 70

Technology	LED
Max. temp.	40 °C
Light output	2000 to 3330 lm
Control gear	«Industry» rated



## Key features

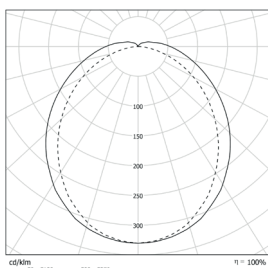
Small luminaire
Suitable for repeated switching on and off
Long maintenance intervals
Durable and maintainable luminaire
Resistant to external UV-rays
Very good resistance to oils and hydrocarbons



## Options

<b>Control gears</b>	
Electronic gear unit for DALI dimming	RD
<b>Color temperature</b>	
3000K	830
5000K	850
<b>Finishings</b>	
End caps and fixing straps in Stainless Steel 316 L	MR
<b>Housing</b>	
Housing in Polycarbonate	PO
<b>Fixings</b>	
Hinged fixing straps for maintenance by tilting	BAR
Fixing straps with HSHC screw	BAV
<b>Disconnectable Plug (IP68/IP69K)</b>	
3 pole disconnectable Plug, lockable with a threaded ring	PS3
<b>Disconnectable output cord with IP68 Plug (length 0,80 m)</b>	
Output cord with a 3 pole WIELAND Plug	CW3

## Photometry



## Principal part numbers

Lumens* (lm)	Designation	Part No.	Cons. (W)	L (mm)
2000	FOU70 13H840 POME 113LN SA	3403 0260	18	995
2660	FOU70 14H840 POME 113LN SA	3403 0280	23	1275
3330	FOU70 15H840 POME 113LN SA	3403 0300	30	1560

\* Light output of the luminaire

## Specifications

<b>Technical data</b>	
Light source	High efficiency LED modules (160 lm/W) 70 000 h L80/B50 at max. operating temperature Replaceable LED modules CRI > 80
Optic	Light mixing chamber Satin Diffuser to minimise glare
Heat management	Heatsink in aluminium
Color temperature	4000K
Control Gear	Resistant electronic driver, «Industry» rated (non-dimmable) Resistance to voltage surge: 320 V AC, 48 h Supports voltage peaks < 1 kV
Power supply	220-240 V 50/60 Hz
Electrical class	Class I
Operating temperature	-20 °C to +40 °C
Connection	Cable gland in nickel-coated brass for Ø cable 5-12 mm (3 × 2,5 mm <sup>2</sup> )
Fixing	2 reinforced Stainless Steel fixing straps
Method of Construction	Housing in one piece with reinforced imperviousness by radial expansion of the sealing Closing by tightening the nut on the cable gland Patented system with automatic electrical connection on closure (CLOSE'N CONNECT) Maintenance without intervention at the cable by extracting the gear tray on the opposite side of the power supply
<b>Materials</b>	
Housing	Polycarbonate protected by a coextruded layer of PMMA
End caps, fixing straps	Stainless Steel 304L
Gaskets	EPDM)
<b>Standards</b>	
Imperviousness	IP66, IP68 and IP69K
Shock resistance	IK10
Fire resistance	650 °C
Vibration resistance	Meets the severe application requirements of the standard EN 60598-1 (tested according to CEI 60068-2-6)